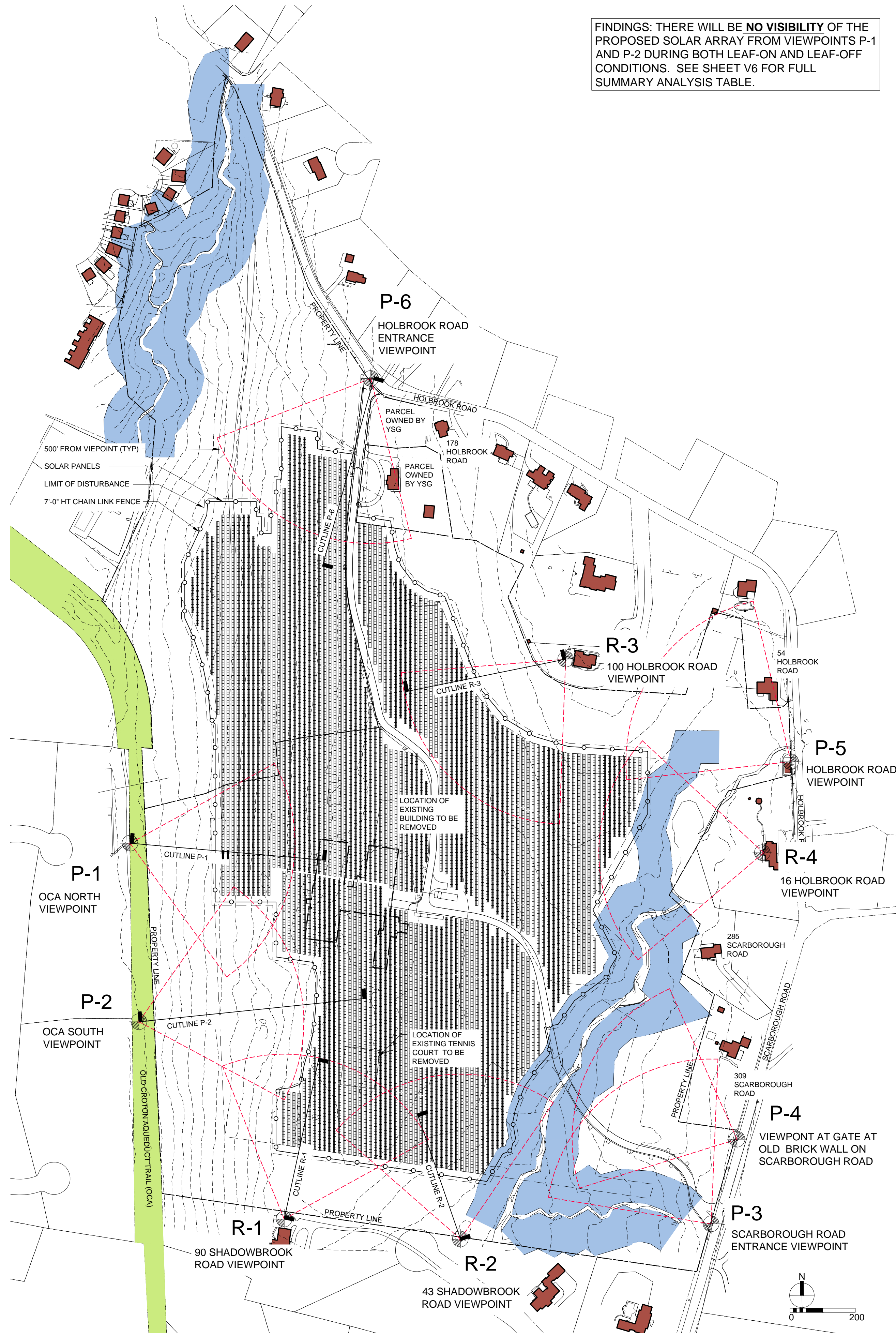
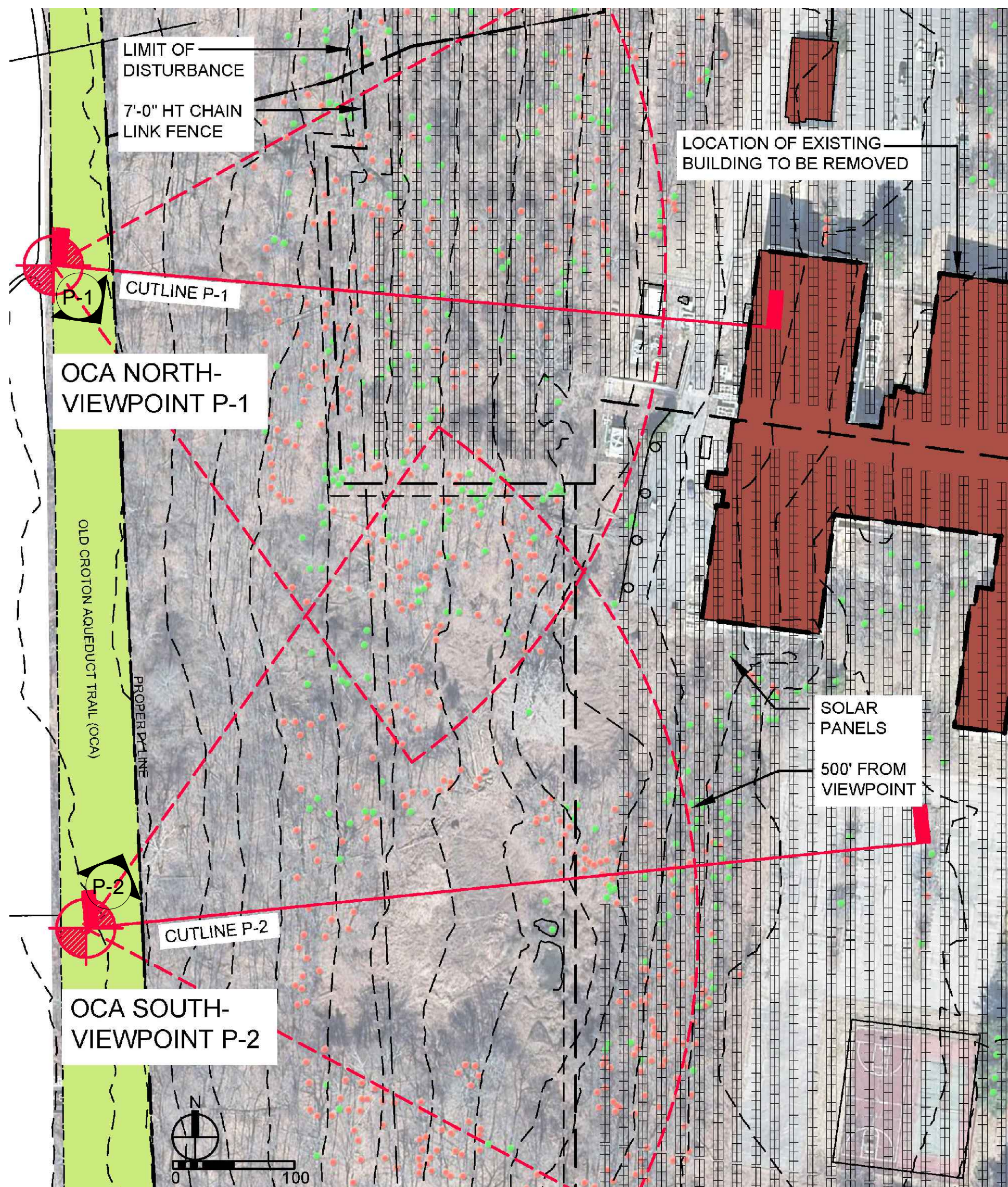


## **VISUAL ANALYSIS**





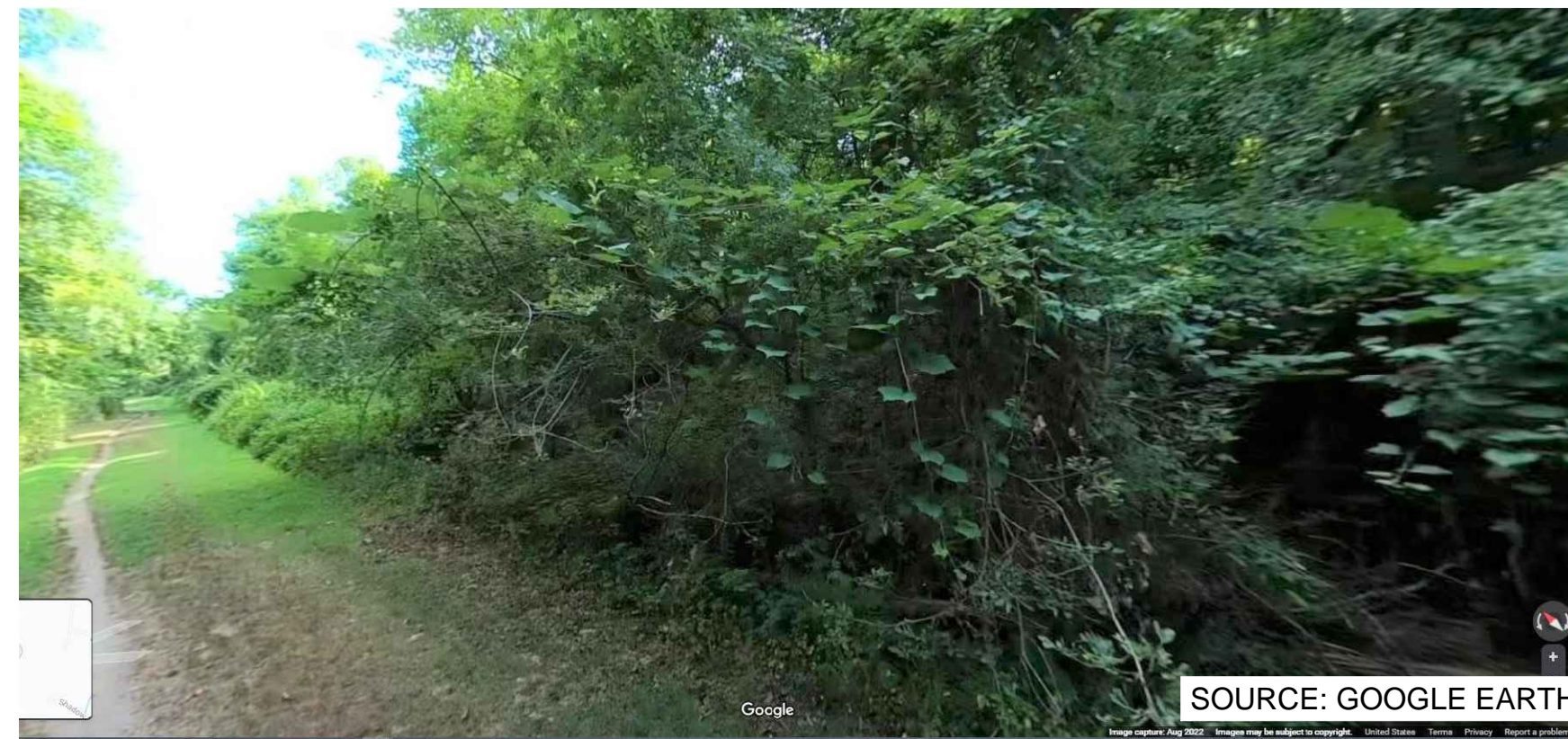
FINDINGS: THERE WILL BE **NO VISIBILITY** OF THE PROPOSED SOLAR ARRAY FROM VIEWPOINTS P-1 AND P-2 DURING BOTH LEAF-ON AND LEAF-OFF CONDITIONS. SEE SHEET V6 FOR FULL SUMMARY ANALYSIS TABLE.



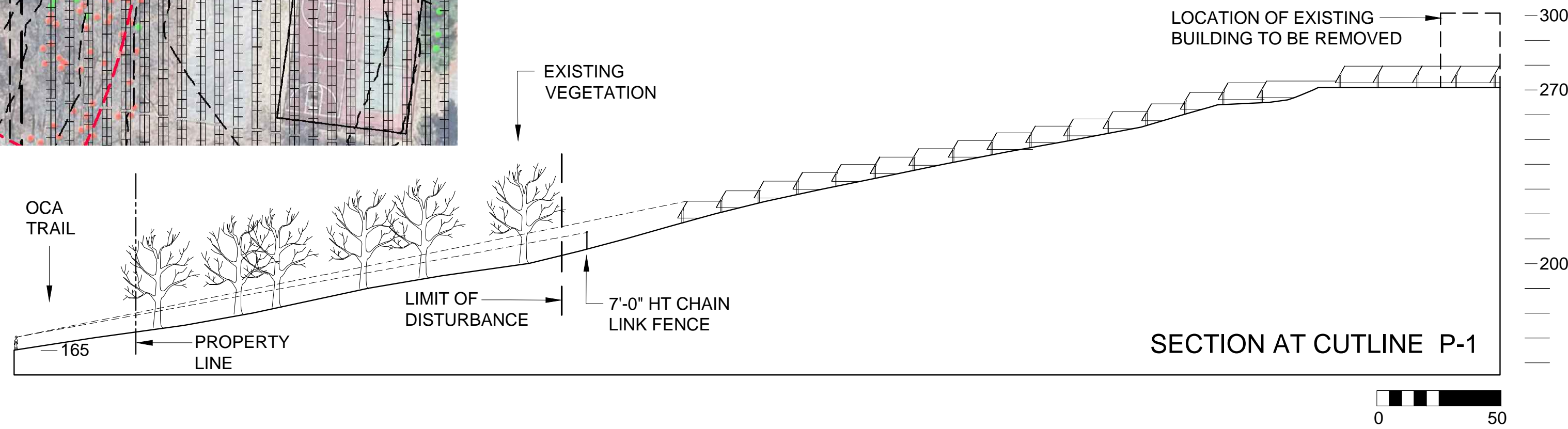
VISUAL ANALYSIS DIAGRAM



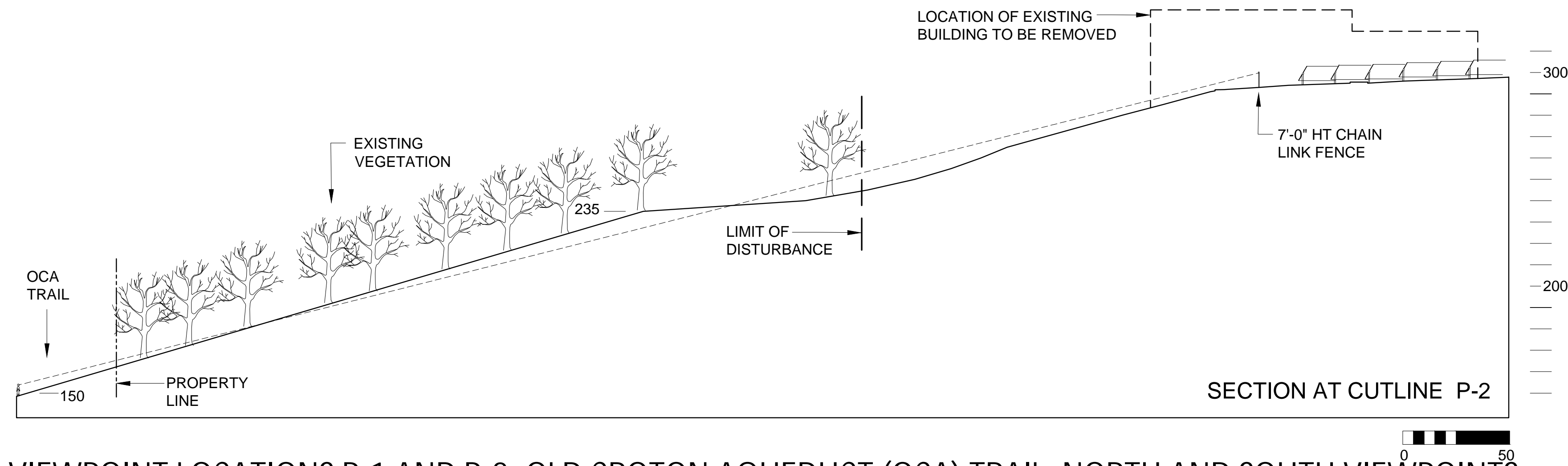
P-1 OCA NORTH VIEWPOINT



P-2 OCA SOUTH VIEWPOINT



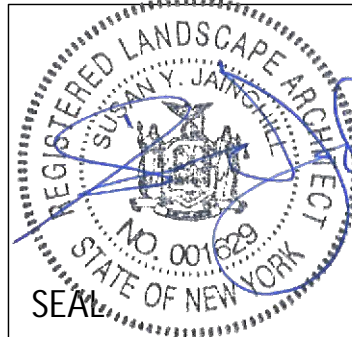
SECTION AT CUTLINE P-1



SECTION AT CUTLINE P-2

1  
V1  
VIEWPOINT LOCATION DIAGRAM

2  
V1  
VIEWPOINT LOCATIONS P-1 AND P-2: OLD CROTON AQUEDUCT (OCA) TRAIL, NORTH AND SOUTH VIEWPOINTS



LANDSCAPE ARCHITECT:  
**ASPECT 120**  
LANDSCAPE ARCHITECTURE P.C.  
90 N Broadway, Suite 223  
Irvington, NY 10533  
www.aspect120.com  
(914) 274-8544

DRAWING TITLE:

VIEWPOINT LOCATION DIAGRAM AND VISUAL ANALYSIS

JOB NO: D11  
OWNER: YSG SOLAR  
PROJECT: BRIARCLIFF SOLAR ARRAY  
345 SCARBOROUGH ROAD  
BRIARCLIFF MANOR, NY

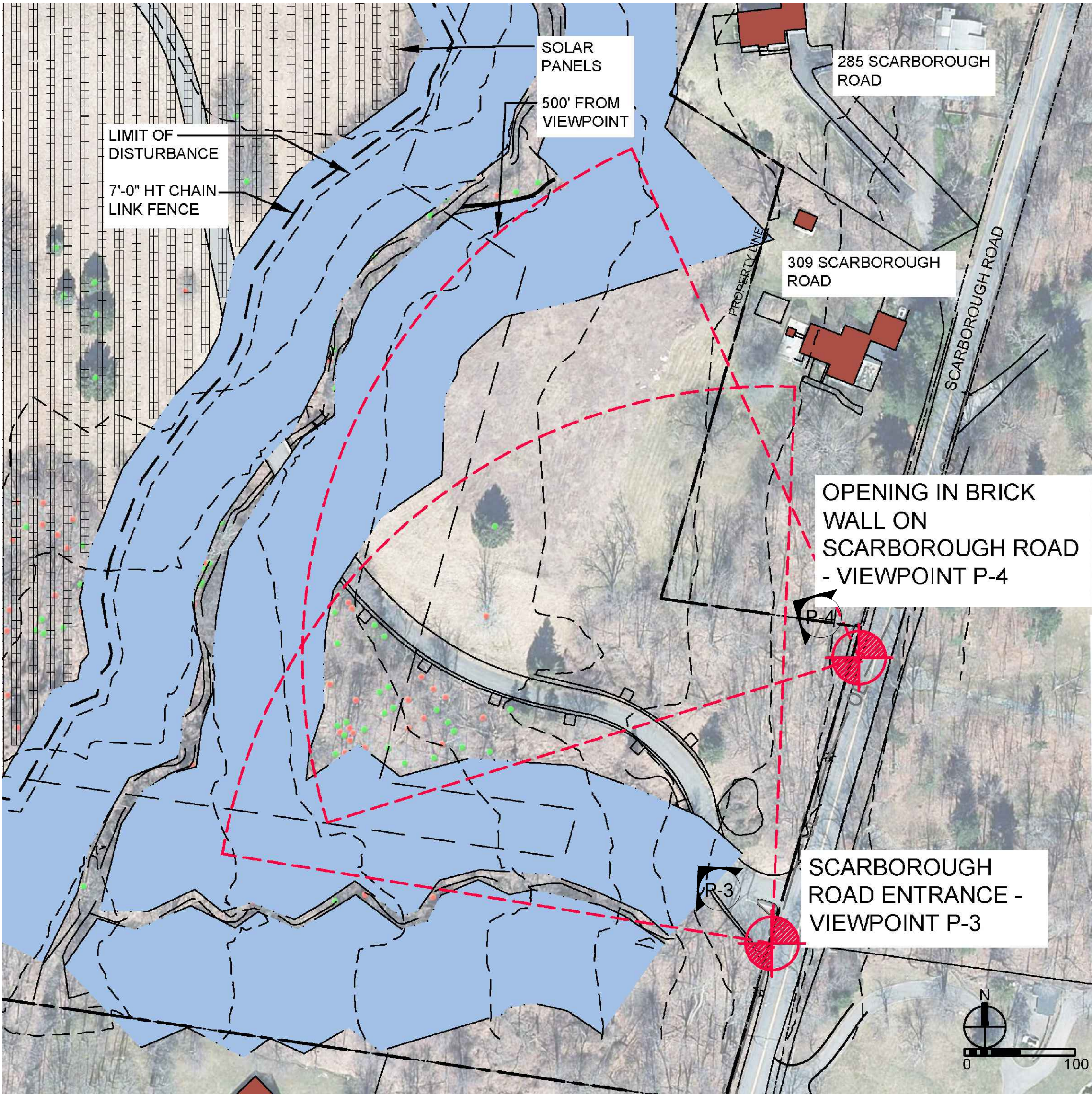
REVISIONS:

SHEET NO

V1

SCALE: AS SHOWN  
DATE: 4/10/2023





VISUAL ANALYSIS DIAGRAM

1  
V2

VIEWPOINT LOCATIONS P-3: SCARBOROUGH ROAD AT ACCESS ROAD AND P-4: OLD BRICK WALL GATE



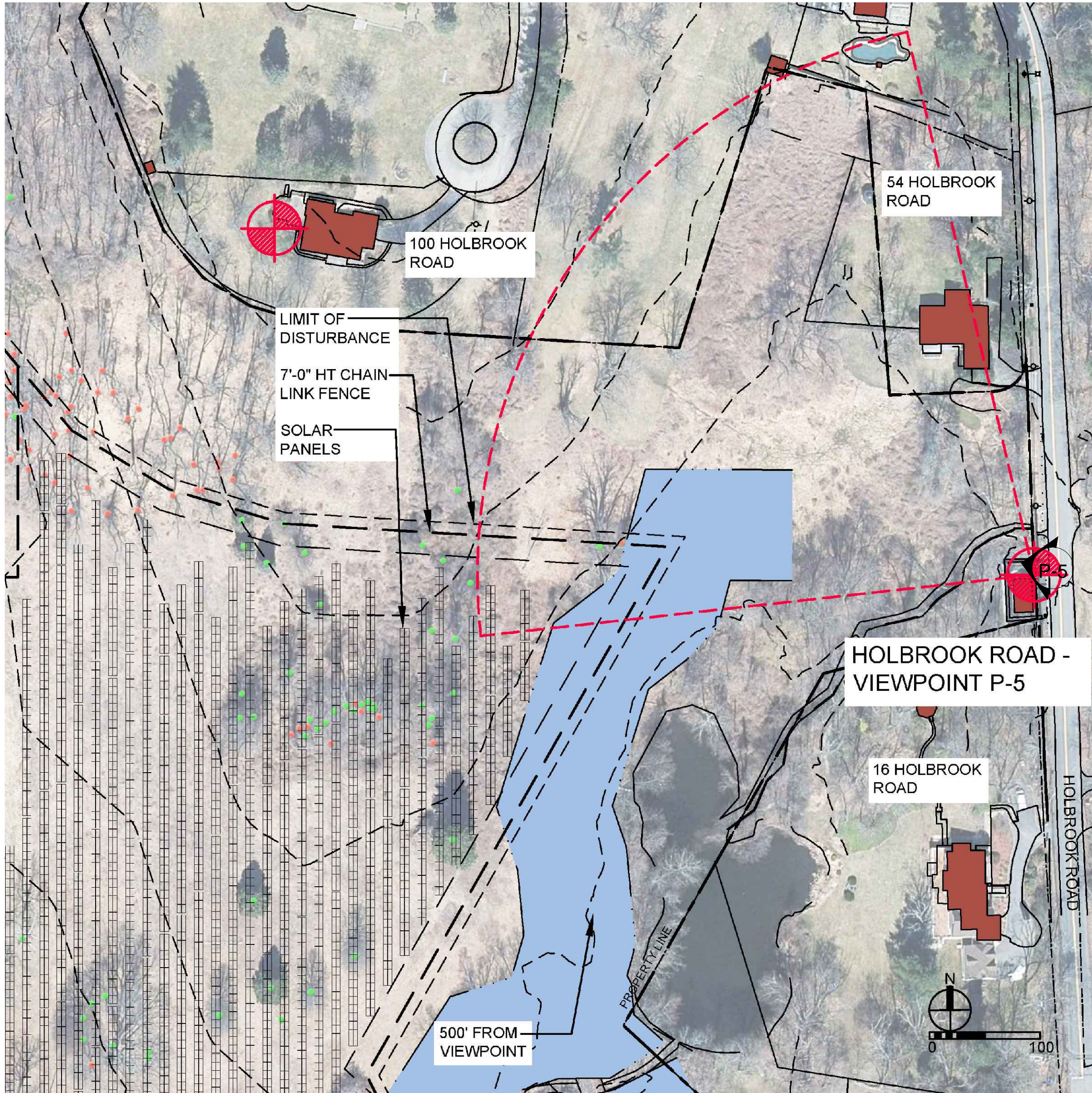
VIEW FROM P-3: SCARBOROUGH ROAD SITE ENTRANCE, LEAF-ON (LEFT) AND LEAF OFF(RIGHT) CONDITIONS



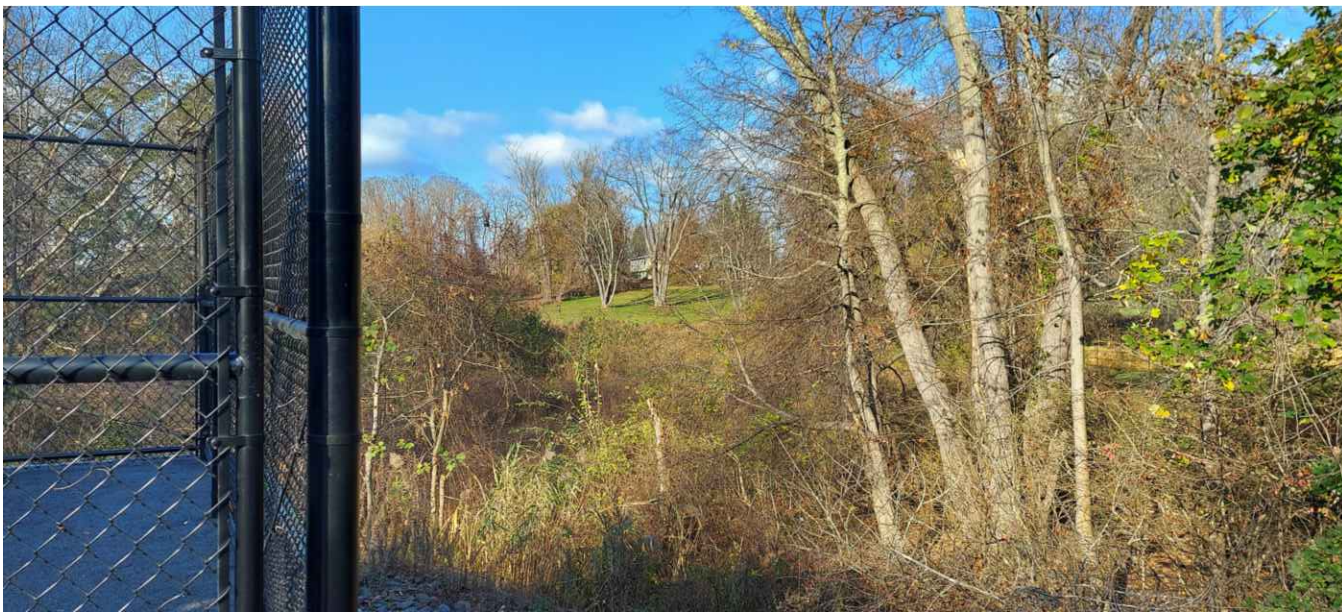
VIEW FROM P-4: SCARBOROUGH ROAD, OLD BRICK WALL GATE, LEAF-ON CONDITIONS



VIEW FROM P-4: SCARBOROUGH ROAD, OLD BRICK WALL GATE, LEAF-OFF CONDITIONS



VISUAL ANALYSIS DIAGRAM



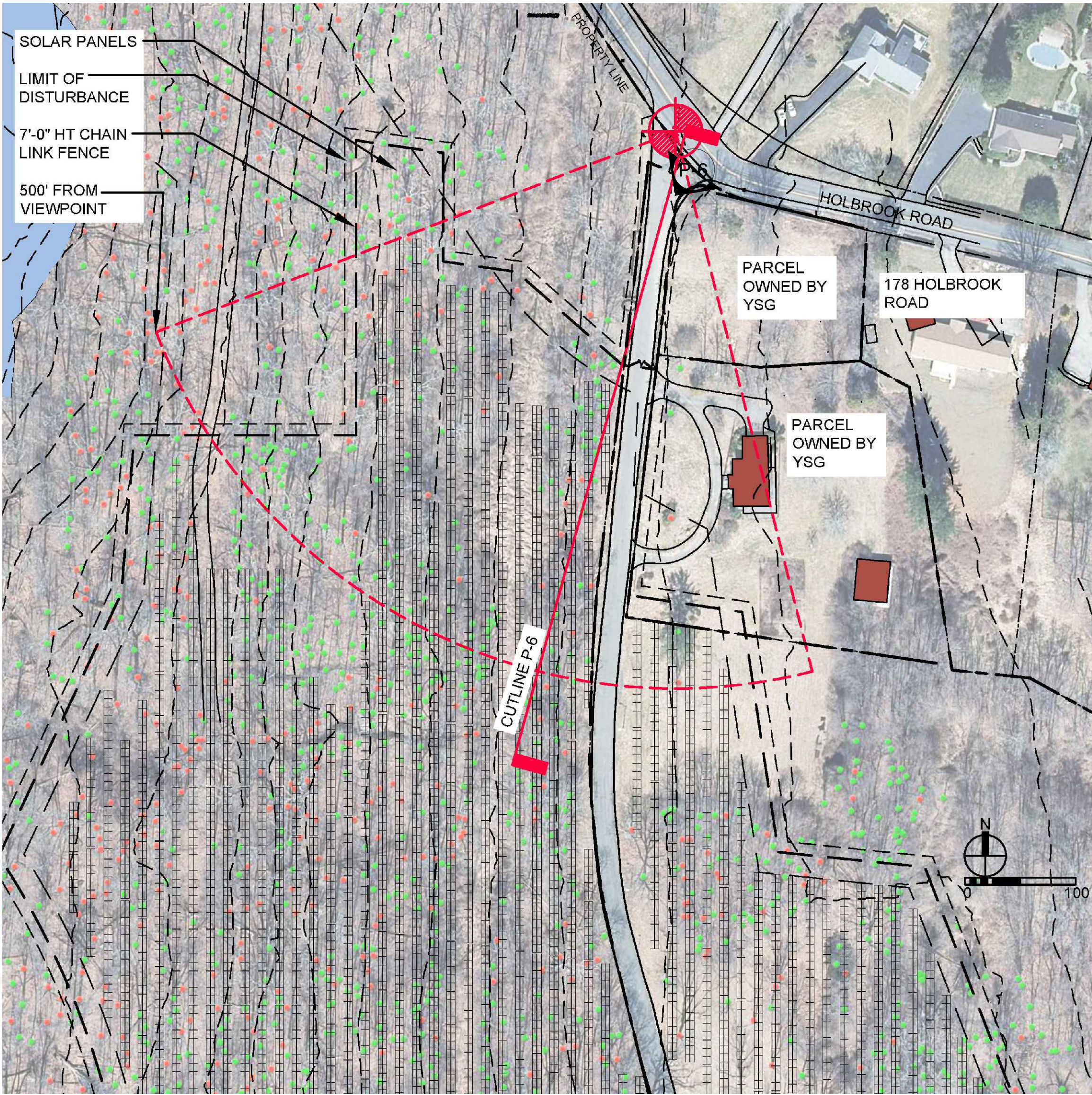
VIEW FROM P-5: HOLBROOK ROAD NORTH OF UTILITY STRUCTURE

2  
V2

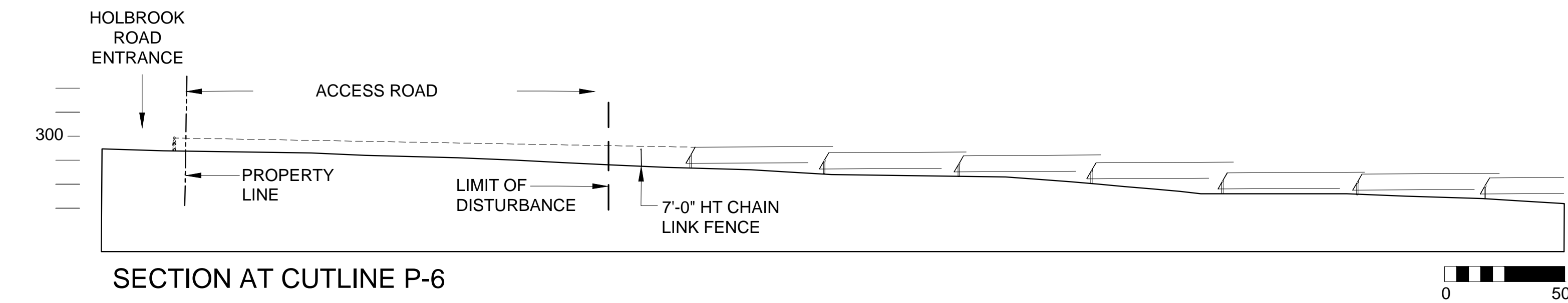
VIEWPOINT LOCATION P-5: HOLBROOK ROAD NORTH OF UTILITY STRUCTURE

FINDINGS: THERE WILL BE NO VISIBILITY OF THE PROPOSED SOLAR ARRAY FROM VIEWPOINTS P-3, P-4, AND P-5 DURING LEAF-ON CONDITIONS. ANY VISIBILITY OF THE PROPOSED SOLAR ARRAY DURING LEAF-OFF CONDITIONS WILL HAVE LITTLE TO NO VISUAL IMPACT AT THE LOCATION OF THESE VIEWPOINTS. SEE SHEET V6 FOR FULL SUMMARY ANALYSIS TABLE.





VISUAL ANALYSIS DIAGRAM



1  
V3  
VIEWPOINT LOCATION P-6: HOLBROOK ROAD AT ACCESS ROAD

FINDINGS: THERE WILL BE VISIBILITY OF THE PROPOSED SOLAR ARRAY FROM VIEWPOINT P-6, HOWEVER THE IMPACT OF THE VISIBILITY WILL BE MINIMAL. VISIBILITY CAN BE FURTHER MINIMIZED WITH MITIGATION PLANTING. SEE SHEET V6 FOR FULL SUMMARY ANALYSIS TABLE.



EXISTING VIEW FROM HOLBROOK ROAD AT ACCESS ROAD (VIEWPOINT P-6) LEAF OFF CONDITIONS



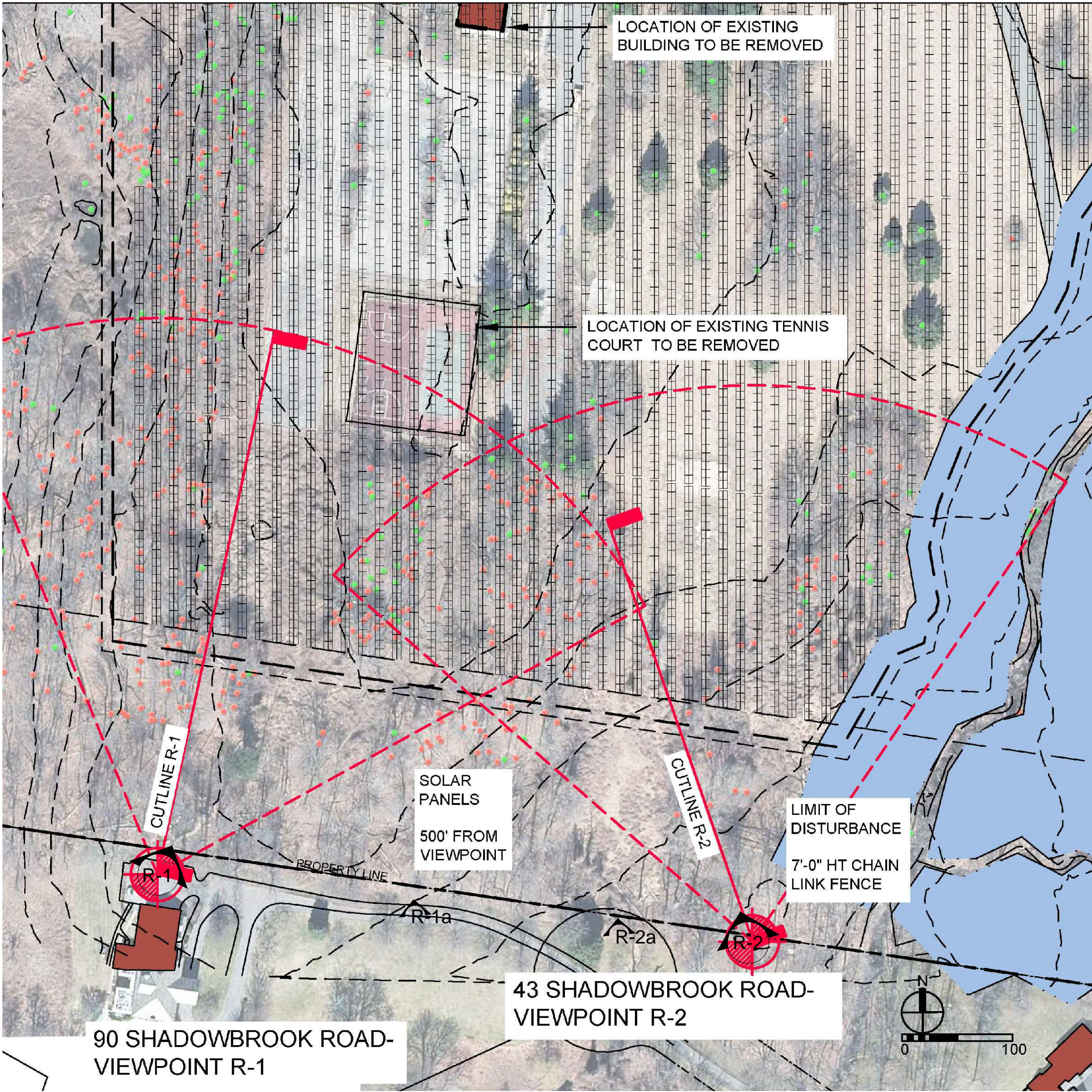
RENDERING OF FUTURE CONDITIONS AT VIEWPOINT R-6 (NO MITIGATION SHOWN)



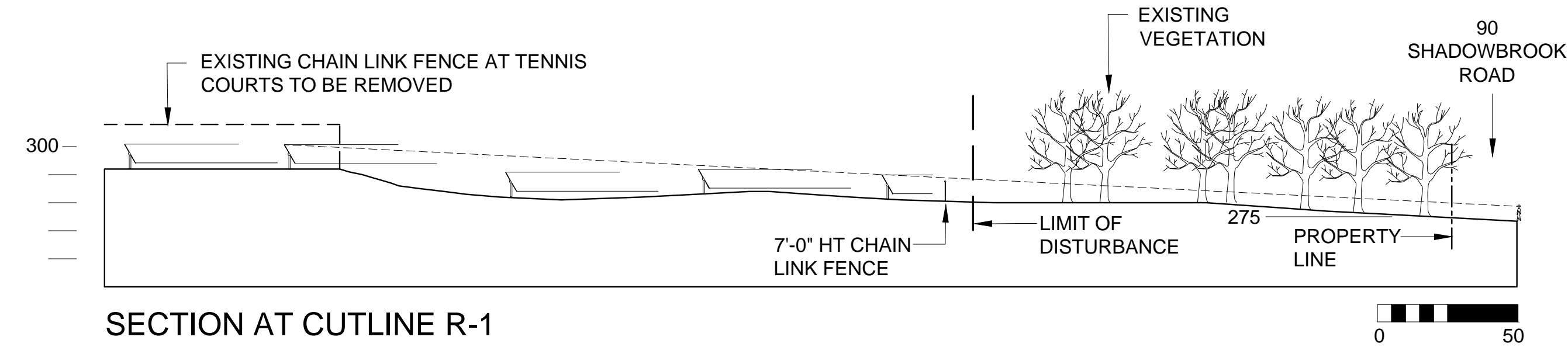
RENDERING OF FUTURE CONDITIONS AT VIEWPOINT R-3 WITH MITIGATION PLANTING

- NOTES:
1. RENDERING OF FUTURE CONDITIONS WITH MITIGATION PLANTING IS SHOWING LEAF-ON CONDITIONS OVERLAID ONTO THE LEAF-OFF EXISTING CONDITIONS PHOTO.
  2. RENDERING SHOWS PLANTING AT ANTICIPATED CONDITIONS APPROXIMATELY 5 TO 8 YEARS AFTER PLANTING.

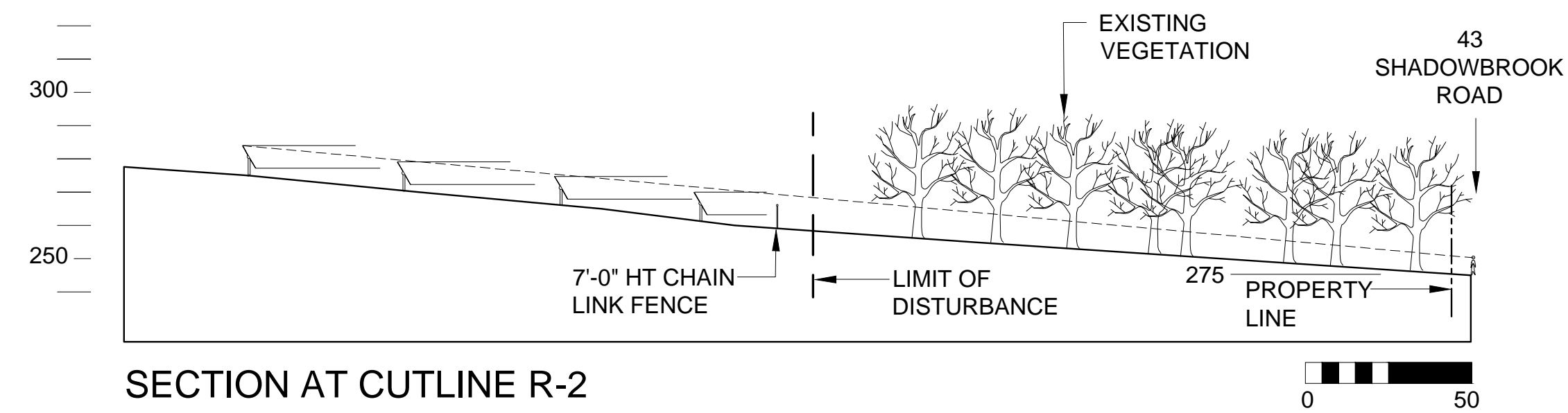




VISUAL ANALYSIS DIAGRAM



SECTION AT CUTLINE R-1



SECTION AT CUTLINE R-2



VIEW FROM R-1: 90 SHADOWBROOK ROAD, LEAF-ON CONDITIONS



VIEW FROM R-1, LEAF-OFF CONDITIONS



VIEW FROM R-1a, LEAF-OFF CONDITIONS



VIEW FROM R-2a, LEAF-OFF CONDITIONS

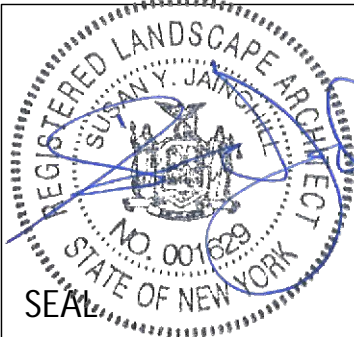


VIEW FROM R-2: 43 SHADOWBROOK ROAD, LEAF-ON CONDITIONS

FINDINGS: THERE WILL NO VISIBILITY OF THE PROPOSED SOLAR ARRAY FROM DURING LEAF- ON CONDITIONS AND THERE WILL BE MINIMAL VISIBILITY OF THE PROPOSED SOLAR ARRAY FROM VIEWPOINTS R-1 AND R-2 DURING LEAF-OFF CONDITIONS. VISIBILITY CAN BE FURTHER MINIMIZED WITH MITIGATION PLANTING AND LONG TERM WOODLAND MANAGEMENT EFFORTS. SEE SHEET V6 FOR FULL SUMMARY ANALYSIS TABLE.

1  
V4

VIEWPOINT LOCATIONS R-1: 90 SHADOWBROOK ROAD AND R-2: 43 SHADOWBROOK ROAD



LANDSCAPE ARCHITECT:  
**ASPECT 120**  
LANDSCAPE ARCHITECTURE P.C.  
90 N Broadway, Suite 223  
Irvington, NY 10533  
www.aspect120.com  
(914) 274-8544

DRAWING TITLE:

VISUAL ANALYSIS

JOB NO: D11  
OWNER: YSG SOLAR  
  
PROJECT: BRIARCLIFF SOLAR ARRAY  
345 SCARBOROUGH ROAD  
BRIARCLIFF MANOR, NY

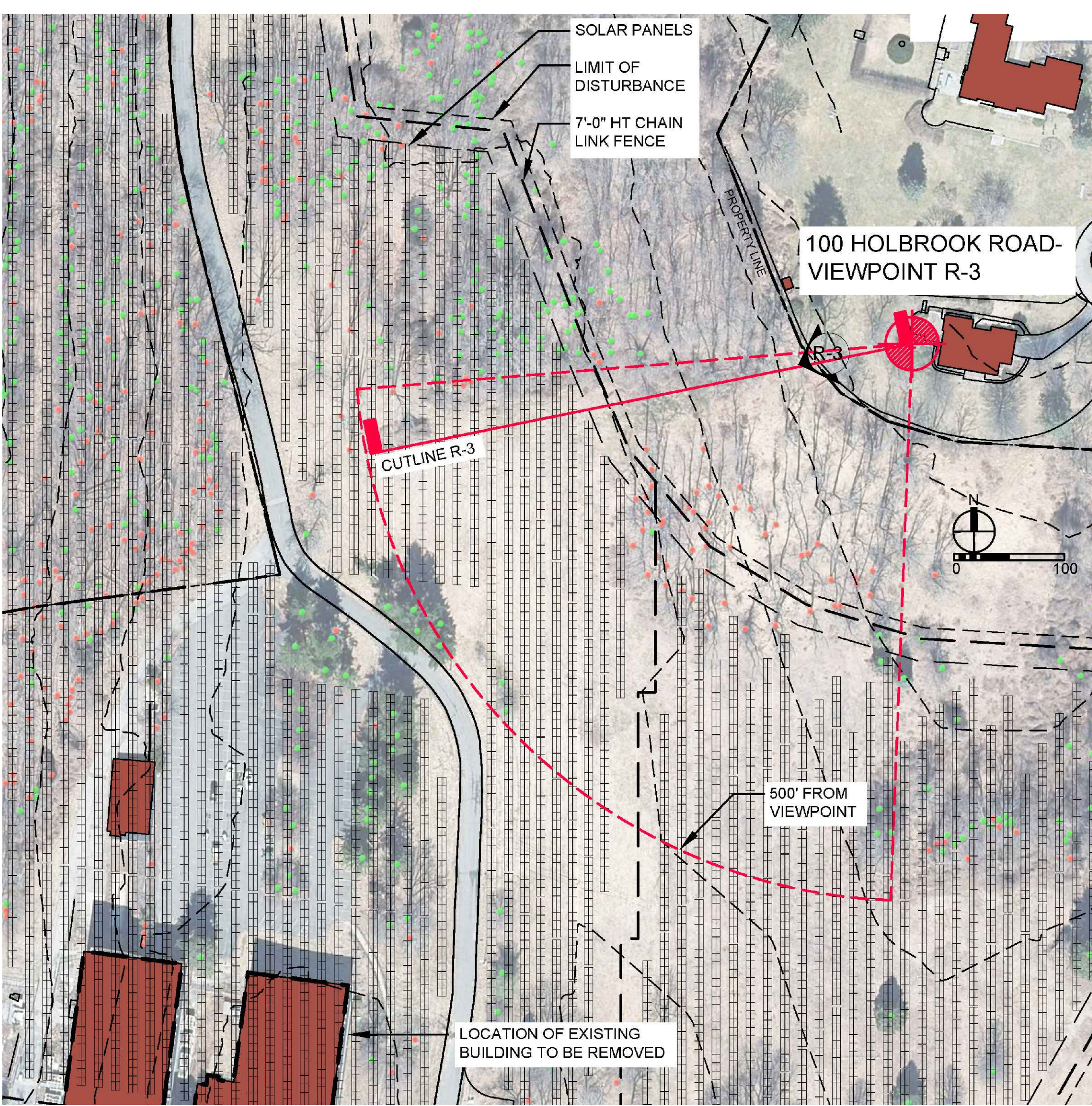
REVISIONS:

SCALE: AS SHOWN  
DATE: 4/10/2023

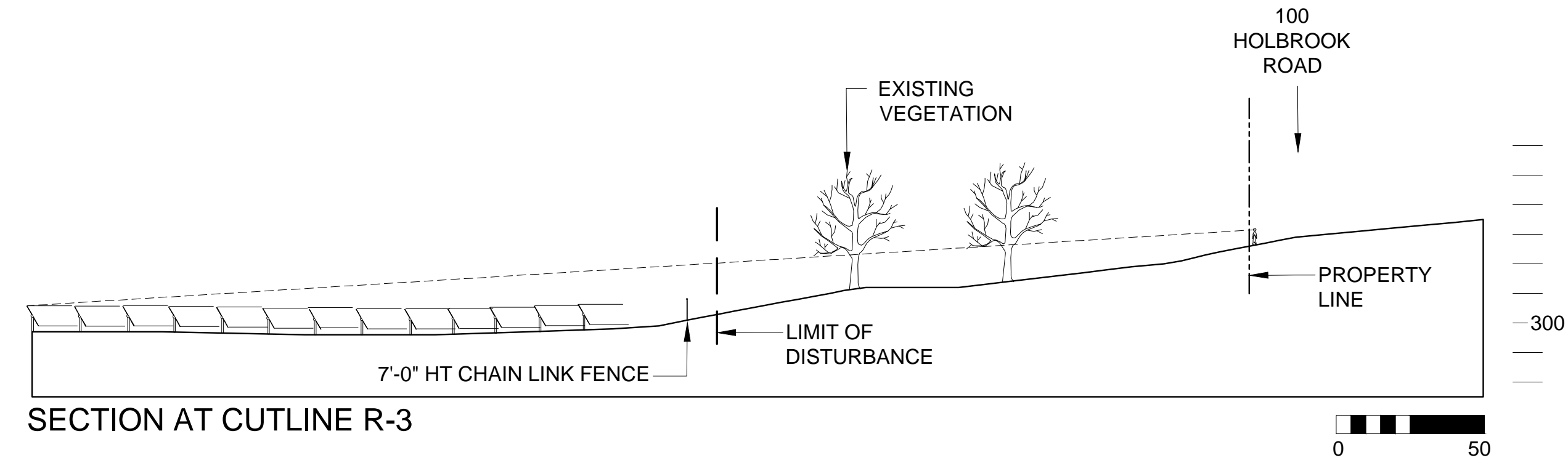
SHEET NO

V4





VISUAL ANALYSIS DIAGRAM



1  
V5 VIEWPOINT LOCATIONS R-3: 100 HOLBROOK ROAD

FINDINGS: FROM VIEWPOINT R-3 THE PROPOSED SOLAR ARRAY WILL BE VISIBLE DURING LEAF-OFF CONDITION AND SOMEWHAT VISIBLE DURING LEAF-ON CONDITIONS. THE VISIBILITY CAN BE MINIMIZED AND THE IMPACT OF THE VISIBILITY CAN BE REDUCED WITH MITIGATION PLANTING AND LONG TERM WOODLAND MANAGEMENT EFFORTS. SEE SHEET V6 FOR FULL SUMMARY ANALYSIS TABLE.

- NOTES:
1. EXISTING VIEW PHOTO ((AND THE UNDERLYING IMAGE USED IN THE RENDERINGS OF FUTURE CONDITIONS) WAS TAKEN FROM THE PROPERTY LINE AT APPROXIMATELY 5 FEET ABOVE EXISTING GRADE.
  2. RENDERING OF FUTURE CONDITIONS WITH MITIGATION PLANTING IS SHOWING EARLY SPRING/ LEAF-ON CONDITIONS OVERLAID ONTO THE LEAF-OFF EXISTING CONDITIONS PHOTO.
  4. RENDERING SHOWS PLANTING AT ANTICIPATED CONDITIONS APPROXIMATELY 5 TO 8 YEARS AFTER PLANTING.
  5. THE CONDITIONS OF THE AREA IDENTIFIED FOR MITIGATION PLANTING IS PRIMARILY WOODLAND IN CHARACTER WITH AREAS OF DENSE CANOPY AND AREAS OF CLEARINGS. THE LOCATION AND STRUCTURE OF EXITING TREE ROOTS AND EXISTENCE OF DENSE TREE CANOPY WILL DICTATE POTENTIAL LOCATIONS OF MITIGATION PLANTING. THEREFOR, LOCATION OF PLANTING REPRESENTED IN 'RENDERING OF FUTURE CONDITIONS' IS APPROXIMATE. THE EXACT LOCATIONS OF PLANTS TO BE INTRODUCED WILL BE DETERMINED IN THE FIELD BY THE OWNER'S LANDSCAPE ARCHITECT.



EXISTING VIEW FROM 100 HOLBROOK ROAD (VIEWPOINT R-3) IN LEAF-OFF CONDITIONS



RENDERING OF FUTURE CONDITIONS AT VIEWPOINT R-3 (NO MITIGATION SHOWN)



RENDERING OF FUTURE CONDITIONS AT VIEWPOINT R-3 WITH MITIGATION PLANTING



